



E. J. DWYER CO.

10910 Pump House Road
Annapolis Junction, MD 20701

Representing Quality Plumbing Products and Providing Superior Service Since 1970



Comfort Designs Trench Drain SST3838TR with decorative grab bars, curtain rod, and woodgrain seat. Finish: Ashley. Pressure Balancing Valve and handshower Assembly Pre-plumbed.
Standard List Price: 8,365.00

Sale Price: 950.00

Phone: 240-553-0112
Fax: 888-811-4830

Email: 411@ejdwyer.com
Website: www.ejdwyer.com

TECHNICAL DATA SHEET

TRENCH DRAIN SHOWER SYSTEM

XST3838TR .75 4P L-BAR

ADA/ANSI code compliant

NOTE: For ADA/ANSI compliance, pressure balancing mixing valve, hand-held shower with slide bar, vacuum breaker and 60" hose must be installed per ADA/ANSI guidelines.

TECHNICAL INFORMATION

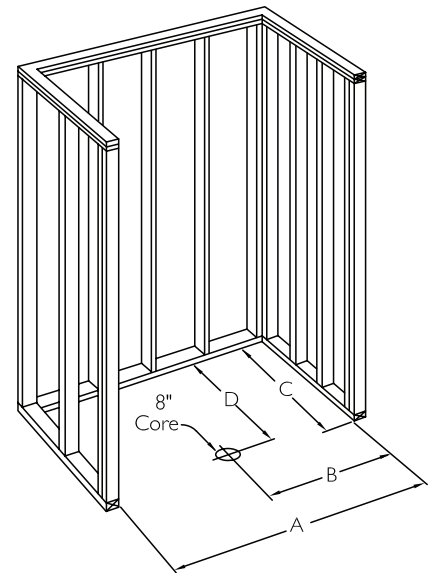
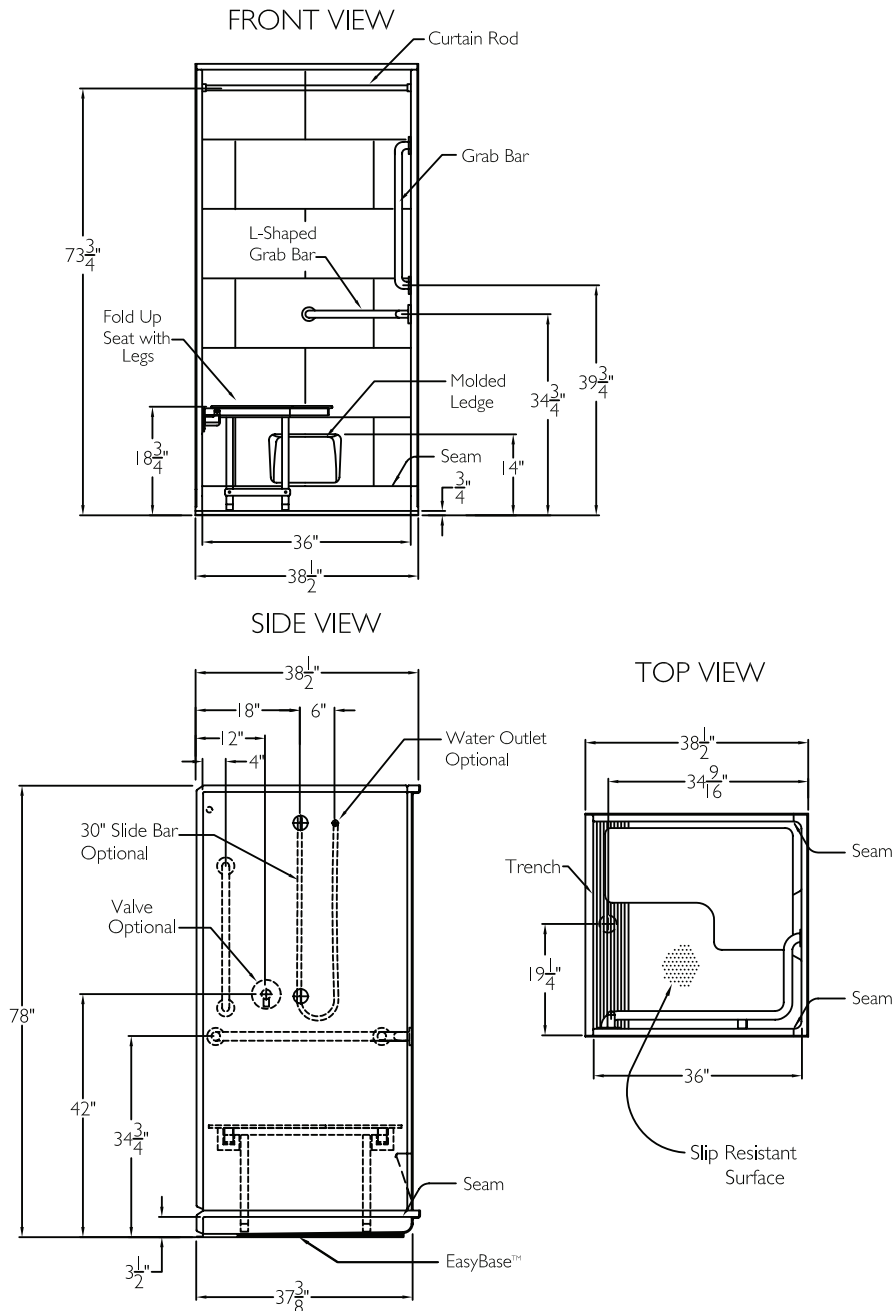
OD 38.5" x 38.5" x 78"

ID 36" x 36" center point

LOAD FACTOR .66

HANDED BY Valve Wall

CODE COMPLIANT
Enhancing Livable Design



FRAMING DIMENSIONS

A 38.75" B 19.375"

C 38.5" D 34.5"

ADDITIONAL CODES

ICC/ANSI I 17.1, ANSI I 24.2, ADAAG, BOCA, NAHBUPC, Southern Building Code

cd
comfortdesigns

comfortdesignsbathware.com | 800.443.7269



E. J. DWYER CO.

10910 Pump House Road
Annapolis Junction, MD 20701

Representing Quality Plumbing Products and Providing Superior Service Since 1970



Comfort Designs 3 Piece G3637BF with grab bars, curtain rod, and white HDPE seat. Pressure Balancing Valve and handshower Assembly Pre-plumbed. Please note unit is non-EZ base.
Standard List Price: 3,174.00

Sale Price: 750.00

Phone: 240-553-0112

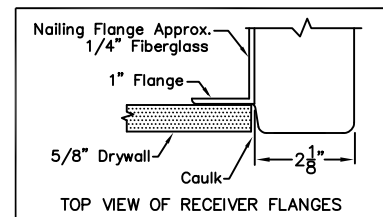
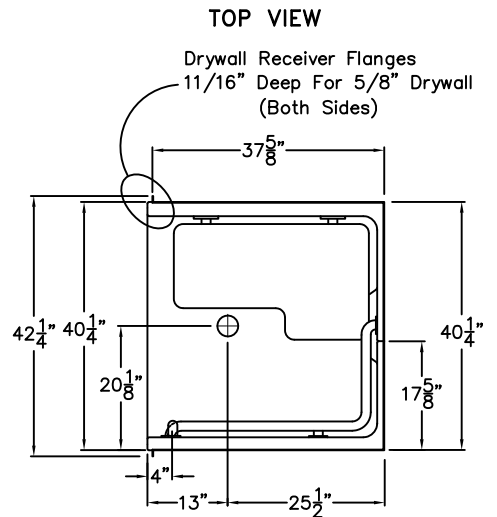
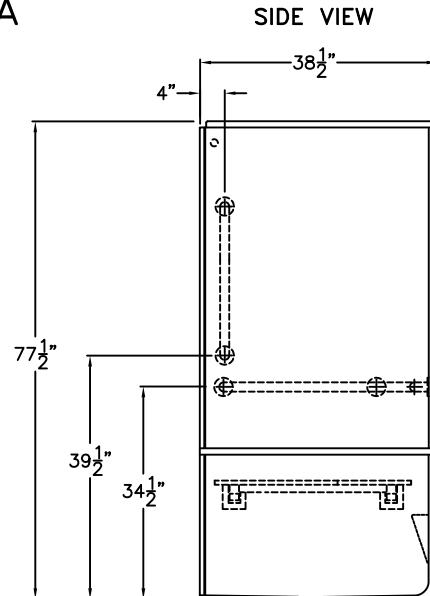
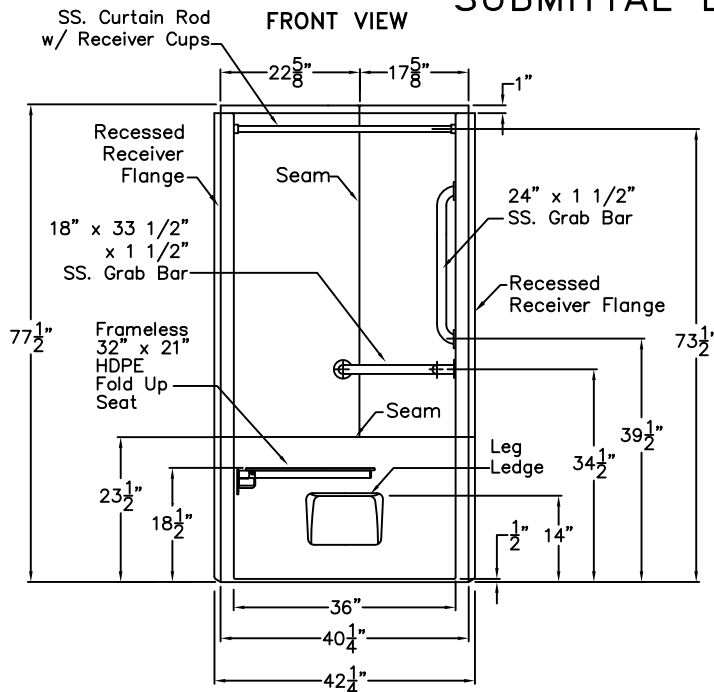
Fax: 888-811-4830

Email: 411@ejdwyer.com

Website: www.ejdwyer.com

Special Needs Series

SUBMITTAL DATA



DUE TO THE NATURE OF THE MATERIALS
DIMENSIONS MAY VARY ± 1/2"

AQUARIUS

Approved By Print Name:

Drawing#: G3637 BF 3P .50 SLB VB FHDP
CR RRF

Approved By Signature:

Date:

Date: 5-18-07

Revised: 10-12-16

Rep.:

Wholesaler:

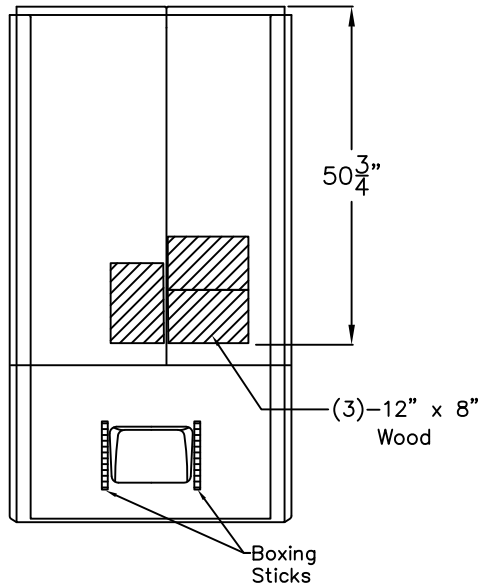
Quote No.:

PRAXIS INDUSTRIES, INC.
435 INDUSTRIAL RD - SAVANNAH, TN 38372
1 (800) 443-7269 - FAX (901) 925-4290

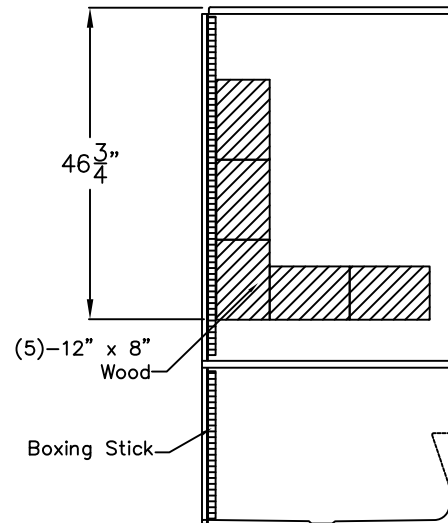
Board Placement

SUBMITTAL DATA

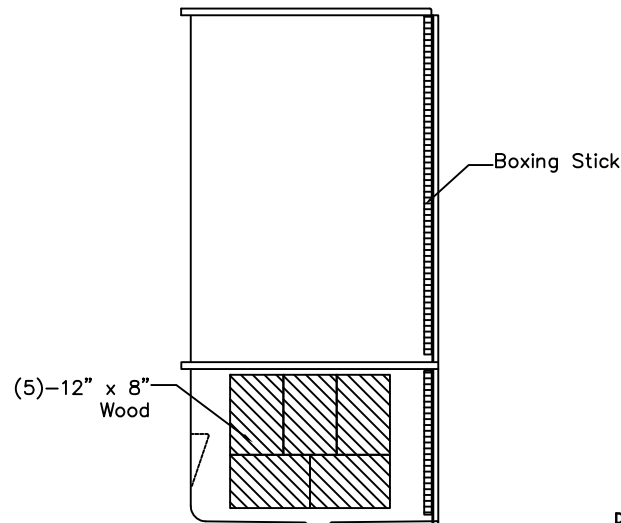
FRONT VIEW



SIDE VIEW



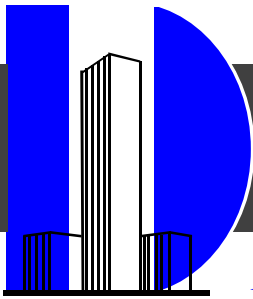
SIDE VIEW



DUE TO THE NATURE OF THE MATERIALS
DIMENSIONS MAY VARY $\pm 1/2"$

Job Name:		AQUARIUS	
Approved by Print Name:		Drawing#: G3637 BF 3P .50 SLB VB FHDP CR RRF-BP	
Approved by Signature:	Date:	Date: 7-31-96	Revised: 10-12-16
Rep.:	Wholesaler:	Quote No.:	

PRAXIS INDUSTRIES, LLC.
435 INDUSTRIAL RD - SAVANNAH, TN 38372
1 (800) 443-7269 - FAX (731) 925-4290



E. J. DWYER CO.

10910 Pump House Road
Annapolis Junction, MD 20701

Representing Quality Plumbing Products and Providing Superior Service Since 1970



Comfort Designs 1 Piece G6239BF with grab bars, curtain rod, and white phenolic seat. 2 Units available. Please note unit is non-EZ base.
Standard List Price: 2,588.00

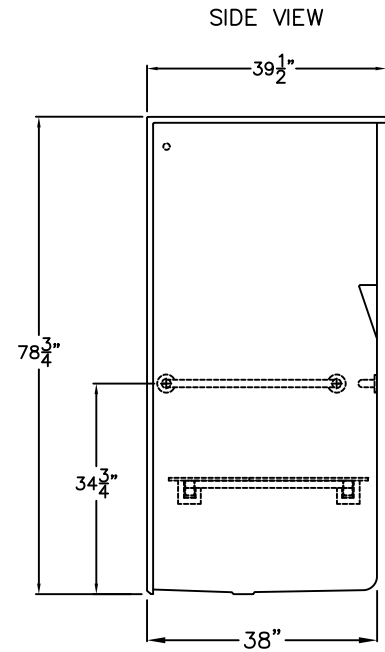
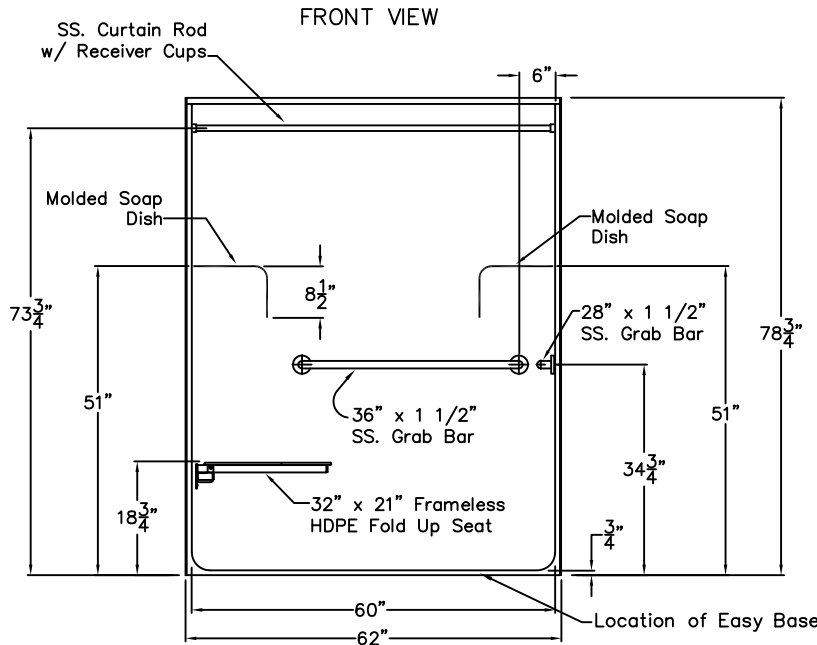
Sale Price: 550.00

Phone: 240-553-0112
Fax: 888-811-4830

Email: 411@ejdwyer.com
Website: www.ejdwyer.com

Special Needs Series

SUBMITTAL DATA



Roll-In Shower Stall

The shower enclosure shall be Aquarius model G 6239 BF center, right or left. Finished surface shall be of an applied acrylic. The base shall be attached to the sump of the unit in such a manner to form an integral part with an inner and outer coating of polyester resin. The unit shall have outside dimensions of 62" x 39 1/2" x 78 3/4". The unit meets ADA, ANSI A117.1, ANSI Z124.1.2, UPC, CSA B45.5, HUD-UM73, and Home Innovation Research Lab.

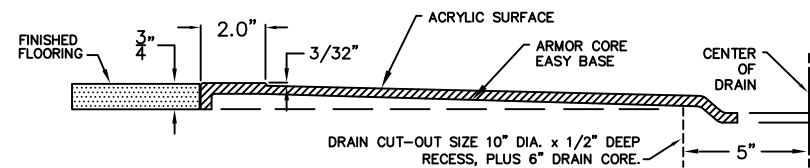
This enclosure shall be equipped with the following installed accessories:

- 1) One 36" x 1 1/2" diameter stainless steel horizontal grab bar on the back wall, 2) One 28" x 1 1/2" diameter stainless steel horizontal grab bar on the side wall, both with 1 1/2" statute clearance, mounted with stainless steel bolts, and secured from the rear with 3" x 3" x 11 gauge metal mounting plates, 3) 32" x 21" frameless white HDPE fold up seat. 4) One inch diameter, 18 gauge stainless steel curtain rod with receiver cups, 5) Factory installed Armor Core Easy Base, 6) 3/4" threshold.

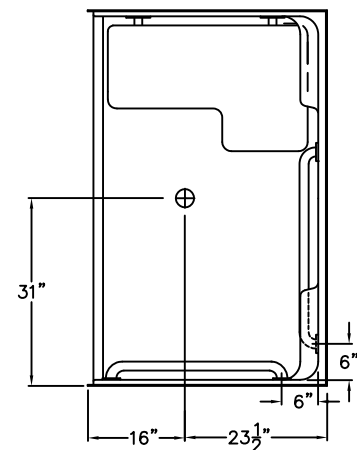
Available Options: 7) Valve package includes: Hand held shower set, swivel connector, 60" flex hose, vacuum breaker, 30" slide bar, wall water outlet fitting, 8) Green anti-bacterial shower curtain and hooks, 9) White shower curtain and hooks. 10) Nurses call box drilling.

This unit features the outside dimensions of 62" of overall width. This does not allow for full enclosure of the bolts that are used to secure the bars and seat in place. This may require the need to notch studs to allow for bolt clearance for installation. For a dry wall enclosed fire wall installation, adjustment of the wallboard may be necessary to provide clearance of the bolts while maintaining the integrity of the drywall fire wall enclosure.

NOTE: THIS UNIT WILL NOT ACCEPT A DOOR.



TOP VIEW



DUE TO THE NATURE OF THE MATERIALS
DIMENSIONS MAY VARY ± 1/2"

AQUARIUS

Approved By Print Name:

Drawing#: G6239 BF .75 Package 1 ADA

Approved By Signature:

Date:

Date: 10-8-08

Revised: 3-31-17

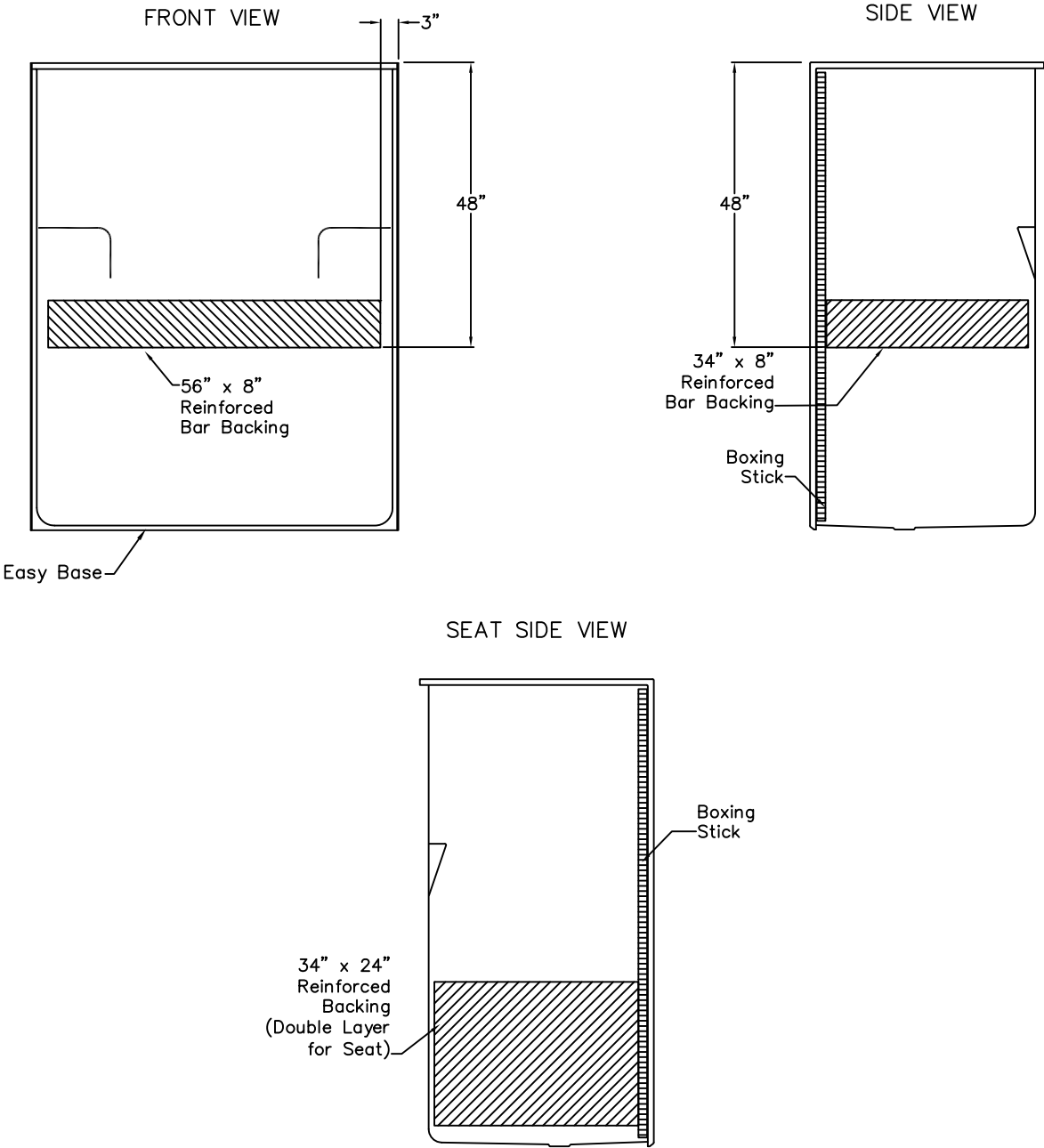
Rep.:

Wholesaler:

Quote No.:

PRAXIS INDUSTRIES, LLC.
435 INDUSTRIAL RD - SAVANNAH, TN 38372
1 (800) 443-7269 - FAX (731) 925-4290

Backing Placement
SUBMITTAL DATA



DUE TO THE NATURE OF THE MATERIALS
DIMENSIONS MAY VARY $\pm 1/2"$

Job Name:		AQUARIUS	
Approved by Print Name:		Drawing#: G6239 BF .75 Package 1 ADA-BP	
Approved by Signature:		Date: 12-16-99	Revised: 3-31-17
Rep.:		Quote No.:	
Wholesaler:			

PRAXIS INDUSTRIES, LLC.
435 INDUSTRIAL RD - SAVANNAH, TN 38372
1 (800) 443-7269 - FAX (731) 925-4290